

DESIGN OF SMALL CANAL

UNITED STATES
DEPARTMENT OF THE INTERIOR
Bureau of Reclamation

STRUCTURES

A WATER RESOURCES TECHNICAL PUBLICATION

DESIGN OF SMALL CANAL STRUCTURES

1978

*Engineering Technology Pertaining
Primarily to the Design of Small
Canal Structures of Less Than
100-Cubic-Foot-Per-Second Capacity*

**UNITED STATES
DEPARTMENT OF THE INTERIOR
BUREAU OF RECLAMATION**

by

**A. J. Aisenbrey, Jr.
R. B. Hayes
H. J. Warren
D. L. Winsett
R. B. Young**

Denver, Colorado

"As the Nation's principal conservation agency, the Department of the Interior has basic responsibilities for the wise use and conservation of our land and water, energy and minerals, fish and wildlife, and park and recreation resources. The Department also has a major responsibility for American Indian reservation communities and for people who live in Island Territories under U.S. administration."

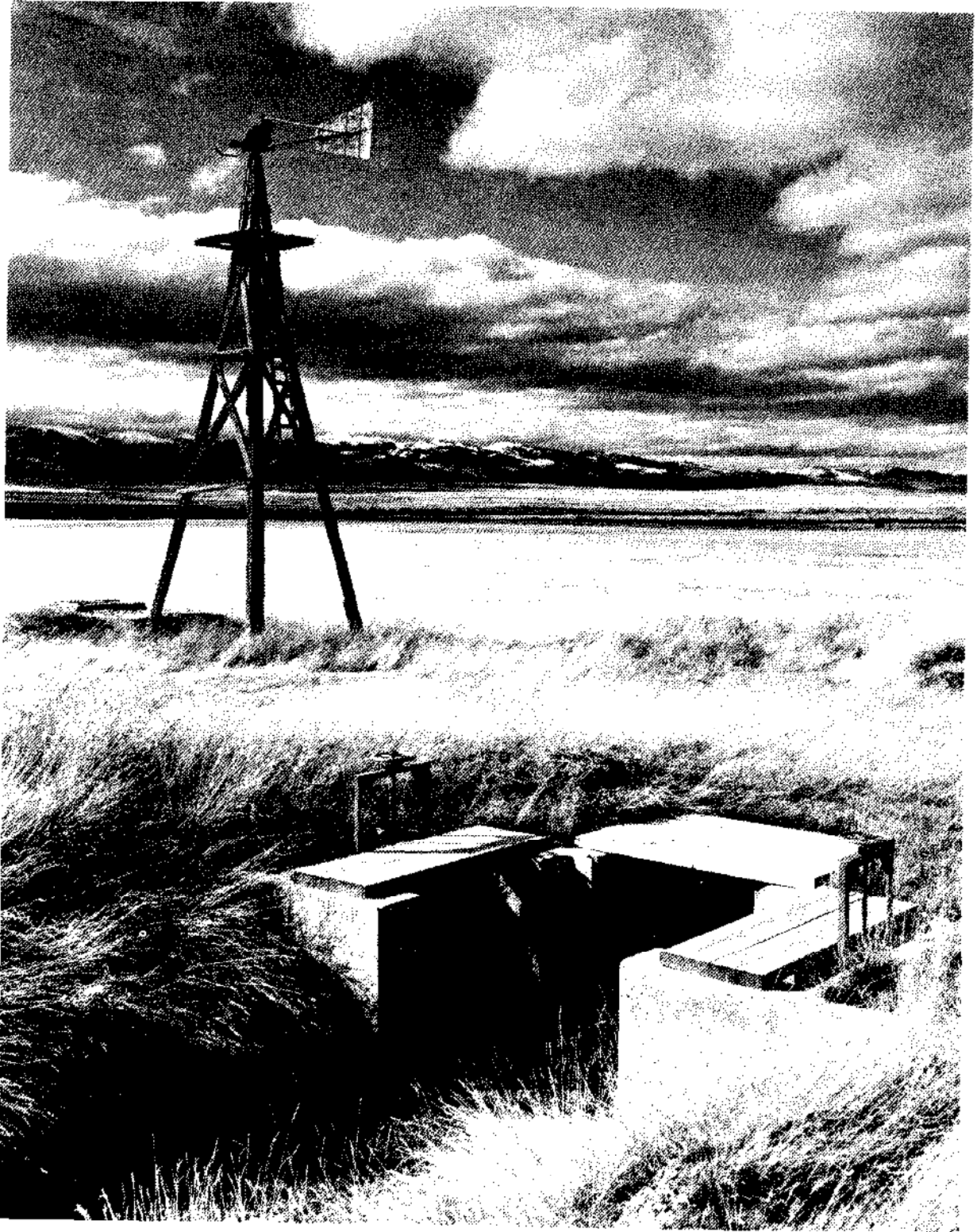


REVISED REPRINT 1978



UNITED STATES GOVERNMENT PRINTING OFFICE

DENVER : 1974



The old and the new. In the shadow of an abandoned windmill, turnouts from a division structure on an East Bench Canal lateral await water for irrigating benchlands east of Dillon, Mont. P699-600-2253NA, March 28, 1968

Preface

“Let man have dominion over the earth and let the earth bring forth grass, the herb yielding seed, and the fruit tree yielding fruit after its kind.” So is it written in the Book of Genesis.

The availability of water has determined the course of empires in many civilizations. When made available, its use for irrigating crops has been practiced for thousands of years by many peoples of the world. But only since the late 1800's has man applied scientific knowledge to watering drylands to increase crop production. The wise use of soil and water resources has changed millions of acres of once barren wasteland and desert into productive farms supporting prosperous communities.

Development of water resources by the Government to provide irrigation water for the arid lands of the western United States was initiated when the Reclamation Act of 1902 was passed during President Theodore Roosevelt's administration. Because of his strong leadership ability and contempt for abusive exploitation of our natural resources, he became regarded as the steward of the public's welfare.

Reclamation engineers and scientists through the years have developed canal structures for irrigation systems which can effectively perform their intended functions. This publication has been prepared to illustrate the application of canal structures having design discharge capacities up to 100 cubic feet per second. Several types of canal structures have been standardized for this capacity range and are presented herein. Structure sizes required to discharge these flows are relatively small; however, engineering principles used in their design are also applicable to canal structures of greater capacity.

The need for this publication became apparent by the number of requests received, both foreign and domestic, during the past years. It is intended that this book provide the design engineer with a source of condensed information for use as a guide in efficiently designing small canal structures. The design engineer must realize, however, that sound engineering principles and judgment must be exercised in the selection and utilization of the structures, and that the use of design methods, procedures, and other information herein remains his responsibility.

There are occasional references to proprietary materials or products in this publication. These must not be construed in any way as an endorsement by the Bureau of Reclamation since such endorsement cannot be made for proprietary products or processes of manufacturers or the services of commercial firms for advertising, publicity, sales, or other purposes.

The text of this publication was prepared by a design team comprised of Bureau of Reclamation engineers from the Engineering and Research Center at Denver, Colorado, under the overall direction of H. G. Arthur, Director of Design and Construction.

The text was coordinated and edited by A. J. Aisenbrey, Jr., Civil Engineer, Hydraulic Structures Branch. Team members who authored the presentations for the canal structures were R. B. Hayes, D. L. Winsett, and R. B. Young, Civil Engineers, Hydraulic Structures Branch and H. J. Warren, General Engineer, Engineering Reference Branch. Editorial guidance, final review, and preparation of the manuscript for publication

was performed by W. E. Foote, General Engineer, of the Technical Services Branch. The revised reprint was edited by R. D. Mohrbacher, General Engineer, Technical Services and Publications Branch.

Many photographs used in the book were obtained through the cooperation of various Bureau of Reclamation offices and assembled for selection by R. S. Dinsmore, Civil Engineering Technician, Hydraulic Structures Branch under the guidance of D. L. Winsett.

Illustrations were prepared in the Drafting Branch, Division of Engineering Support by L. L. McGhghy and W. D. Anderson under the guidance of W. W. Groom and direction of B. F. Wilson.

Special recognition is given to Dr. J. W. Hilf, Chief, Division of Design, G. N. Thorsky, Chief, Division of Engineering Support; A. T. Lewis, Chief, Hydraulic Structures Branch; G. W. Birch, Head, Canal Structures and Bridges Section and engineers in this section for their support, guidance, and counsel.

The engineers who authored and edited this publication wish to express a special thanks to the staff of the Media Unit who worked many long and hard hours to obtain a quality publication. Other thanks are directed to the printing assistants, production unit personnel, and those who coordinated the work flow.

Food and fiber, essential to the well-being of mankind begins with the smallest viable seed, which when its fruit is harvested may provide substance to placate the hunger of man.

To believe that even the smallest seed will grow
is

To believe in the force of will.

To transform the desert into a living oasis is
To transform despair into hope,

That all mankind may be enriched
And share in the power of Charity.

Contents

Preface	Page v
-------------------	-----------

Chapter I—General Requirements and Design Considerations

A. GENERAL REQUIREMENTS

<i>Section</i>		<i>Page</i>
1-1.	Purpose	1
1-2.	Structures	1
	(a) Conveyance structures	1
	(b) Regulating structures	1
	(c) Water measurement structures	2
	(d) Protective structures	2
	(e) Structure components and appurtenances	4
1-3.	Other requirements	4
	(a) Canal	4
	(b) Other structures	5
	(c) Soils exploration	5
	(d) Hydrology	6
	(e) Sedimentation	6
	(f) Operation and maintenance	6

B. DESIGN CONSIDERATIONS

1-4.	General	6
	1. <i>Loads</i>	
1-5.	General	7
1-6.	Dead load weights	7
1-7.	Operating deck uniform live loads	7

Chapter I—General Requirements and Design Considerations—Continued

<i>Section</i>		<i>Page</i>
1-8.	Lateral pressures	7
	(a) Water	7
	(b) Earth	7
	(c) Construction and operating equipment wheel surcharge	7
	(d) Ice	7
	(e) Wind	8
1-9.	Other pressures	8
	(a) Uplift	8
	(b) Hydraulic transients	8
	(c) Seismic	8
1-10.	Wheel loads transmitted to buried conduit	8
	(a) Highways	8
	(b) Railroads	8
	2. <i>Stability</i>	
1-11.	Bearing capacity	9
1-12.	Sliding coefficient	9
1-13.	Overturning	9
1-14.	Percolation	9
	3. <i>Hydraulics</i>	
1-15.	Hydraulic control	9
1-16.	Hydraulic head losses	10
	(a) Friction	10
	(b) Transitions and bends	10
1-17.	Discharge coefficients	10
	(a) Orifice	10
	(b) Weir	10
	4. <i>Structural Considerations</i>	
1-18.	Reinforced concrete	10
	(a) Allowable stresses	10

Chapter I—General Requirements and Design Considerations—Continued

Section	Page
(b) Minimum reinforcement requirements	11
(c) Minimum wall thickness	11
(d) Fillets	14
(e) Cutoffs	14
1-19. Structural steel and welding	14
<i>5. Canal</i>	
1-20. Freeboard	14
1-21. Winter operation	14
1-22. Profile sheet	14
<i>6. Forms for Structures</i>	
1-23. Monolithic concrete	16
1-24. Precast concrete	16

C. BIBLIOGRAPHY

1-25. Bibliography	17
------------------------------	----

Chapter II—Conveyance Structures

A. GENERAL

2-1. Purpose	19
------------------------	----

B. ROAD CROSSINGS

2-2. Purpose and description	19
2-3. Application	19
2-4. Advantages	21
2-5. Design considerations	21
(a) Pipe	21
(b) Transitions	22
(c) Pipe collars	22
(d) Canal erosion protection	23
2-6. Design example	23
(a) Given	23
(b) Determine	23
(c) Check of design	24

C. INVERTED SIPHONS

2-7. Purpose and description	24
2-8. Application	24
2-9. Advantages and disadvantages of inverted siphons	26

Chapter II—Conveyance Structures—Continued

Section	Page
2-10. Structure components	26
(a) Pipe	26
(b) Transitions	27
(c) Pipe collars	27
(d) Blowoff structures	27
(e) Canal freeboard and erosion protection	28
(f) Wasteways	28
(g) Safety features	28
2-11. Hydraulic design considerations	28
2-12. Design procedure	29
2-13. Design example	29
(a) Given	32
(b) Determine	32

D. BENCH AND ELEVATED FLUMES

2-14. Purpose and description	38
(a) General	38
(b) Bench flumes	38
(c) Elevated flumes	38
<i>1. Hydraulic Considerations</i>	
2-15. Flume section	39
(a) Ratio $\frac{b}{d}$	39
(b) Slope and velocity	39
(c) Freeboard	40
2-16. Transitions	40
(a) General	40
(b) Inlet	40
(c) Outlet	41
(d) Freeboard	41
(e) Cutoffs	41
<i>2. Structural Considerations of a Rectangular Bench Flume</i>	
2-17. Flume section	41
(a) Stability	41
(b) Wall loads	41
(c) Concrete thickness	41
(d) Drainage	41
(e) Joints	41
(f) Safety requirements	42
2-18. Design example	42
(a) Given	42
(b) Determine	42

**Chapter II—Conveyance Structures—
Continued**

<i>Section</i>	E. DROPS	<i>Page</i>
	1. <i>General</i>	
2-19.	Function	48
2-20.	Hydraulic design	50
	2. <i>Rectangular Inclined Drops</i>	
2-21.	Purpose and description	50
2-22.	Advantages and disadvantages	59
2-23.	Structure components	59
	(a) Upstream transitions	59
	(b) Inlet to drop	59
	(c) Rectangular inclined channel	61
	(d) Stilling pool	61
	(e) Outlet	61
2-24.	Percolation	61
2-25.	Design example of R. I. drop with control inlet and stilling pool outlet	62
	(a) Given	62
	(b) Determine control inlet dimensions	62
	(c) Determine hydraulic setting for stilling pool by using table 2-1	63
	(d) Alternative method for determining stilling pool invert elevation	63
2-26.	Design example of R. I. drop with check inlet and stilling pool outlet	64
	(a) Given	64
	(b) Determine check inlet dimensions	64
	(c) Determine hydraulic setting for stilling pool	65
	(d) Determine additional dimensions	65
	3. <i>Pipe Drops</i>	
2-27.	Purpose and description	65
	(a) Type 1	65
	(b) Type 2	65
2-28.	Advantages and disadvantages	65

**Chapter II—Conveyance Structures—
Continued**

<i>Section</i>	<i>Page</i>	
2-29.	Type 1 pipe drop structure components	66
	(a) Upstream transition	66
	(b) Inlet	66
	(c) Pipe	66
	(d) Outlet transitions	66
2-30.	Type 1 pipe drop design considerations	66
	(a) Bends	67
	(b) Pipe cover	67
	(c) Percolation	67
	(d) Freeboard	96
2-31.	Type 2 pipe drop structure components and design considerations	96
	(a) Baffled outlets	98
	(b) Stilling pools	98
	(c) Outlet transition	98
	(d) Design layout	98
	(e) Freeboard	98
2-32.	Design example of a type 1 pipe drop with a control and pipe inlet	98
	(a) Given	99
	(b) Determine	99
	F. CHUTES	
2-33.	Purpose and description	101
	1. <i>Open Channel Chute</i>	
2-34.	Design considerations	104
	(a) Manning's coefficient of roughness (n)	104
	(b) Transitions	104
	(c) Chute section	105
	(d) Trajectory	105
	(e) Stilling pool	106
	(f) Wave formation	108
2-35.	Design procedure	115
2-36.	Design example	116
	2. <i>Pipe Chute</i>	
2-37.	Pipe chute	121
	G. BIBLIOGRAPHY	
2-38.	Bibliography	131

Chapter III—Regulating Structures

A. GENERAL	
<i>Section</i>	<i>Page</i>
3-1. Regulating structures	133
B. CHECKS	
3-2. Purpose and description	134
3-3. Combination structures	134
3-4. Spacing	135
3-5. Design considerations	136
(a) Stability and percolation	136
(b) Stoplogs, gates, and deck	136
(c) Head loss	136
3-6. Design example	136
C. CHECK-DROPS	
3-7. Purpose and description	139
3-8. Design considerations	139
3-9. Application	140
3-10. Design example	140
D. TURNOUTS	
3-11. Purpose and description	146
3-12. Design considerations	146
(a) Velocity	146
(b) Percolation and stability	146
(c) Hydraulics	146
(d) Miscellaneous	146
3-13. Turnouts without water meas- urement	146
3-14. Design example	146
3-15. Turnouts with measurement	149
(a) Flow meters	149
(b) Parshall flumes and weirs	150
(c) Constant-head orifice structures	150
3-16. Design considerations	151
3-17. Design example	154
E. DIVISION STRUCTURES	
3-18. Purpose and description	162

**Chapter III—Regulating Structures—
Continued**

F. CHECK AND PIPE INLETS	
<i>Section</i>	<i>Page</i>
3-19. Description and purpose	166
3-20. Application	166
3-21. Design considerations	166
(a) Upstream transitions	166
(b) Protection	166
(c) Inlet opening	166
(d) Sidewalls	166
(e) Headwall	168
(f) Floor of inlet box and pipe invert	168
(g) Walk planks	168
(h) Pipe diameter	168
(i) Pipe vents	168
3-22. Structure numbering	168
3-23. Design example	168
(a) Assumptions	169
(b) Determine	169
G. CONTROL AND PIPE INLETS	
3-24. Description and purpose	170
3-25. Application	170
3-26. Design considerations	170
(a) Upstream earth transi- tion	170
(b) Erosion protection	171
(c) Control notch	171
(d) Overflow sidewalls	171
(e) Headwall	171
(f) Width of inlet box	171
(g) Inlet invert elevation	171
(h) Pipe diameter	171
3-27. Structure numbering	171
3-28. Design example	173
(a) Given	173
(b) Determine	173
H. BIBLIOGRAPHY	
3-29. Bibliography	178

Chapter IV—Protective Structures

A. GENERAL	
<i>Section</i>	<i>Page</i>
4-1. Purpose	179

**Chapter IV—Protective Structures—
Continued**

<i>Section</i>		<i>Page</i>
	B. WASTEWAYS	
4-2.	Description	179
	(a) Wasteway inlets	179
	(b) Wasteway outlets	180
	(c) Wasteway channel and channel structures	180
	(d) Appurtenant canal structures	181
4-3.	Location and number	181
4-4.	Wasteway capacity considera- tions	181
	(a) Spillway	181
	(b) Wasteway turnout gate	181
	(c) Wasteway outlet	181
	(d) Natural drainage chan- nels	182
4-5.	Limitations	182
	1. <i>Side Channel Spillways</i>	
4-6.	General	182
4-7.	Design considerations	182
	(a) Overflow crest	182
	(b) Side channel	184
	(c) Wasteway turnout gate	184
	(d) Pool	184
	(e) Pipe	184
	(f) Wasteway outlet struc- ture	185
	(g) Percolation	185
	(h) Protection	185
	(i) Operation	185
4-8.	Design example	185
	(a) Assumptions	185
	(b) Solution	185
	(c) Check of hydraulics	187
	2. <i>Gated Wasteway Turnouts</i>	
4-9.	General	189
	(a) Usage	189
	(b) Wasteway capacity	189
	(c) Types of gates	189
4-10.	Hydraulics	190
	(a) Inlet	190
	(b) Slide gates	190
	(c) Radial gates	190
	(d) Trajectory	191
	(e) Outlet	192

**Chapter IV—Protective Structures—
Continued**

<i>Section</i>		<i>Page</i>
4-11.	Lifts and hoists	192
	(a) Manually operated lifts	192
	(b) Power-operated lifts or hoists	192
	(c) Hydraulically con- trolled	192
4-12.	Miscellaneous considerations	192
	(a) Protection	192
	(b) Percolation	192
	(c) Operation	192
4-13.	Design example	192
	(a) Assumptions	192
	(b) Solution	193
	3. <i>Siphon Spillways</i>	
4-14.	General	195
	(a) Usage	195
	(b) Description	195
	(c) Function	195
	(d) Appurtenances	196
4-15.	Design considerations	196
	(a) General	196
	(b) Capacity	196
	(c) Head	196
	(d) Entrance	197
	(e) Crest	197
	(f) Throat	197
	(g) Downstream leg	197
	(h) Siphon breaker	197
	(i) Pool	197
	(j) Outlet transition	197
	(k) Protection	197
	(l) Percolation	198
4-16.	Design example	198
	(a) Assumptions	198
	(b) Solution	198
	4. <i>Check Inlet Wasteway Turnouts</i>	
4-17.	General	201
4-18.	Design considerations	202
	C. CROSS-DRAINAGE STRUCTURES	
4-19.	General	202
	(a) Siphon crossings	202
	(b) Cross-drainage alterna- tives	202

**Chapter IV—Protective Structures—
Continued**

<i>Section</i>	<i>Page</i>
(c) Cross-drainage capacity . . .	203
<i>1. Culverts</i>	
4-20. General	203
4-21. Alinement	203
4-22. Profile	203
4-23. Conduit	204
4-24. Inlet	205
(a) Type 1	205
(b) Type 2	205
(c) Type 3	205
(d) Type 4	205
(e) Precast concrete transi- sitions	205
(f) Earth transitions	205
4-25. Outlet	206
(a) Concrete transitions	206
(b) Outlet energy dissipa- tors	206
4-26. Hydraulics	207
(a) Design capacity	207
(b) Pipe velocity	207
(c) Pipe diameter	207
(d) Hydraulic control	207
(e) Determination of inlet or outlet control	209
(f) Inlet control hydraulics	209
(g) Outlet control hydrau- lics	209
4-27. Pipe collars	210
4-28. Protection	210
4-29. Design example	210
(a) Assumptions	211
(b) Solution	211
(c) Verification of hydrau- lics by the Bernoulli method	213
<i>2. Overchutes</i>	
4-30. General	215
4-31. Alinement	216
4-32. Profile	216
4-33. Capacity	216
4-34. Conduit	216
(a) Rectangular conduit	216
(b) Pipe conduit	218
4-35. Inlet types	218
4-36. Outlet types	218

**Chapter IV—Protective Structures—
Continued**

<i>Section</i>	<i>Page</i>
(a) Concrete transitions	218
(b) Outlet energy dissipa- tors	218
4-37. Pipe overchute hydraulics	218
(a) Inlet transition	218
(b) Pipe velocity	220
(c) Pipe diameter	220
(d) Pipe outlet	220
4-38. Concrete overchute hydraulics	221
(a) Rectangular section	221
(b) Critical flow	221
(c) Inlet transition	221
(d) Chute hydraulics	221
(e) Stilling pool	222
4-39. Other considerations	224
(a) Bank heights	224
(b) Protection	224
(c) Percolation	224
4-40. Design example	224
(a) Assumptions	224
(b) Solution	225
<i>3. Drain Inlets</i>	
4-41. General	230
(a) Location	230
(b) Types	231
(c) Design capacity	231
(d) Canal bank	232
4-42. Pipe drain inlets	232
(a) Inlet	232
(b) Conduit	233
(c) Outlet	233
(d) Percolation	233
(e) Protection	234
4-43. Rectangular concrete drain inlet to earth section	234
(a) Inlet	234
(b) Flume	236
(c) Chute	236
(d) Outlet pool	236
(e) Percolation	237
(f) Protection	237
4-44. Other types of drain inlets	237
(a) Rectangular concrete drain inlets to a concrete-lined canal	237
(b) Gravel blanket drain inlet	237

**Chapter IV—Protective Structures—
Continued**

<i>Section</i>	<i>Page</i>
4-45. Design example	237
(a) Assumptions	237
(b) Solution	238

D. BIBLIOGRAPHY

4-46. Bibliography	241
------------------------------	-----

**Chapter V—Water Measurement
Structures**

A. GENERAL

5-1. Types of measuring structures . . .	243
--	-----

B. PARSHALL FLUMES

5-2. Description	244
5-3. Advantages	245
5-4. Disadvantages	245
5-5. Size selection	245
5-6. Design example with free-flow discharge	246
5-7. Design example with submerged-flow discharge	247
5-8. Use of tables and figures for discharge and free-flow determinations	248
(a) Free-flow discharge	248
(b) Submerged-flow discharge	248
(c) Head losses	248

C. MODIFIED PARSHALL FLUMES

5-9. Description	259
5-10. Determination of upstream canal water surface	259

D. STILLING WELLS

5-11. Description	260
5-12. Design criteria	260

E. WEIRS

5-13. Purpose and description	260
---	-----

**Chapter V—Water Measurement
Structures—Continued**

<i>Section</i>	<i>Page</i>
5-14. Types of weirs	260
5-15. Types of flow	261
5-16. Application	261
5-17. Adjustable weirs	262
5-18. Advantages and disadvantages	262
5-19. Requirements for accurate measurement	266
(a) Weir blade	266
(b) Nappe	266
(c) Approach channel-to-weir relationship	266
(d) Head on weir	273
5-20. Head-discharge relationship	273
(a) Rectangular and Cipolletti weirs	273
(b) V-notch weirs	273
5-21. Design example of selecting and setting a weir	273
(a) Requirements	273
(b) Weir selection	273
(c) Weir setting	273

F. WEIR BOXES

5-22. Purpose and description	291
5-23. Design considerations	291
(a) Head discharge relationship	291
(b) Head losses	291
5-24. Design example	291
(a) Solution	291

G. OPEN-FLOW METERS

5-25. Purpose and description	295
5-26. Design considerations	295
(a) Velocity	295
(b) Requirements for accurate flow measurement	295
(c) Size determination	295
(d) Head loss	295
5-27. Advantages	296
5-28. Disadvantages	296

H. BIBLIOGRAPHY

5-29. Bibliography	297
------------------------------	-----

Chapter VI—Energy Dissipators

<i>Section</i>	<i>Page</i>
A. GENERAL	
6-1. Energy dissipators	299
B. BAFFLED APRON DROPS	
6-2. General	299
(a) Usage	299
(b) Inlet control features	300
(c) Miscellaneous features	300
6-3. Design considerations	301
(a) General	301
(b) Capacity	301
(c) Inlet	301
(d) Baffled apron dimensions	302
(e) Uplift stability	303
(f) Sliding stability	303
(g) Miscellaneous considerations	304
6-4. Design example	304
(a) Assumptions	304
(b) Solution	304
C. BAFFLED OUTLETS	
6-5. Purpose and description	308
6-6. Hydraulic considerations	309
6-7. Sediment and debris	321
6-8. Protection	321
6-9. Basin width design procedure	321
6-10. Design example	321
(a) Given	321
(b) Determination of the basin dimensions	321
(c) Determination of erosion protection requirements	322
D. VERTICAL SLEEVE VALVE STILLING WELLS	
6-11. General	322
(a) Description	322
(b) Types of vertical sleeve valves	323
(c) Usage of vertical sleeve valve stilling wells	325
(d) Limitations	325
6-12. Design considerations	326

**Chapter VI—Energy Dissipators—
Continued**

<i>Section</i>	<i>Page</i>
(a) Inlet conditions	326
(b) Sleeve valve design	327
(c) Hydraulic requirements	327
(d) Well dimensions	328
(e) Armor plating	330
(f) Outlet transition	330
(g) Outlet protection	330
6-13. Design example	330
(a) Assumptions	330
(b) Solution	331

E. BIBLIOGRAPHY

6-14. Bibliography	333
------------------------------	-----

**Chapter VII—Transitions and
Erosion Protection**

A. TRANSITIONS

1. General

7-1. Purpose and description	335
7-2. Types	335
(a) Inline canal structure transitions	335
(b) Cross-drainage pipe structure transitions	336
<i>2. Design Considerations for Pipe Structure Transitions</i>	
7-3. Hydraulic design	336
(a) Pipe submergence	336
(b) Head losses	336
(c) Water surface angle	342
(d) Channel erosion	342
7-4. Cutoffs	342
7-5. Standardization	342
7-6. Type 1 transitions (broken-back)	342
7-7. Type 2 transition	343
7-8. Type 3 transitions	344
7-9. Type 4 transitions	344
7-10. Type 5 transitions	345
7-11. Earth transitions	345

B. EROSION PROTECTION

7-12. Purpose and description	345
---	-----